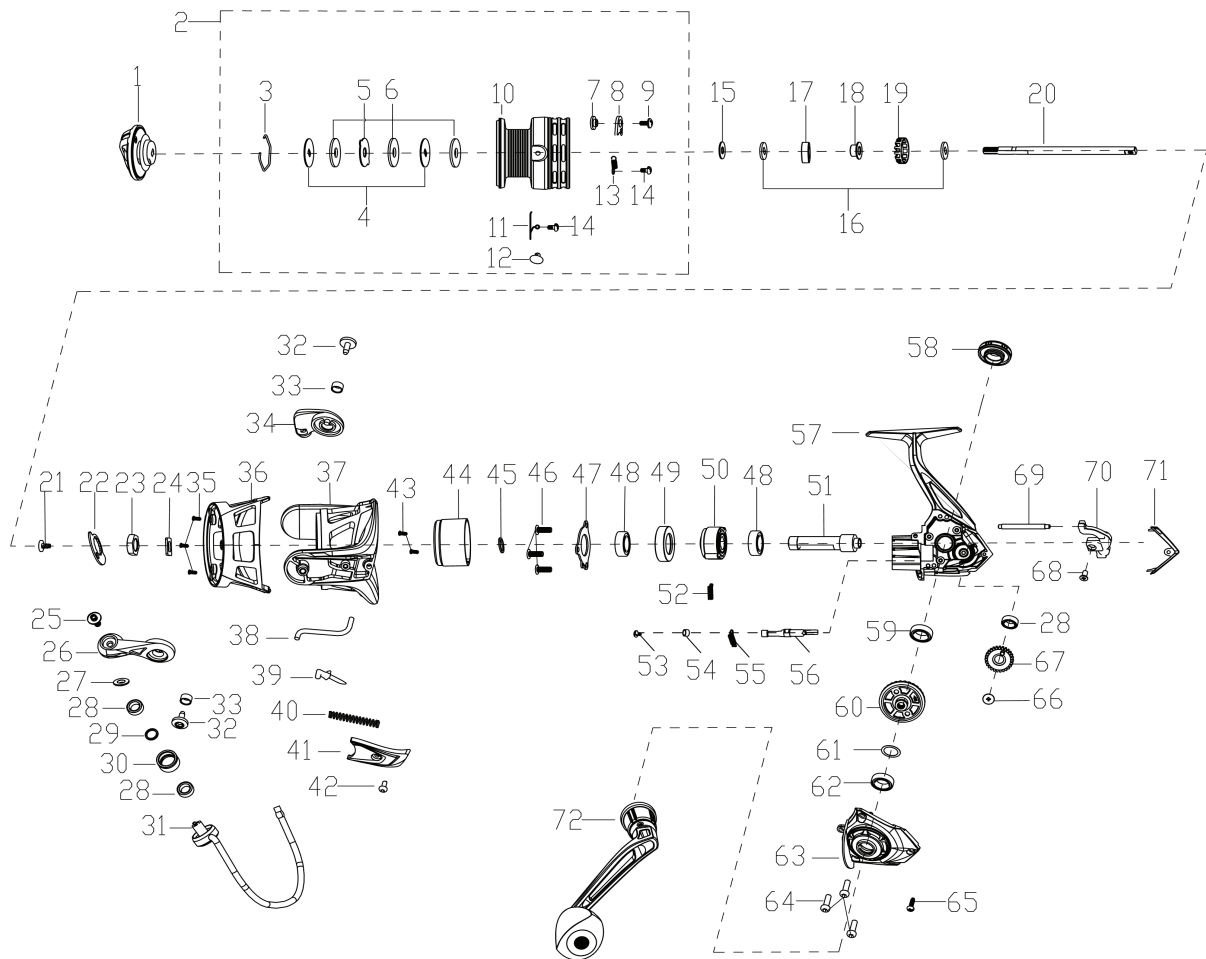


EXPLODED VIEW OF CS4-2000



PARTS LIST OF CS4-2000

ITEM#	PARTS NUMBER	PARTS DESCRIPTION	ITEM#	PARTS NUMBER	PARTS DESCRIPTION
1	B10177-301	Drag Knob Assembly	37	300249-001	Rotor
2	B06177-301	Spool Assembly	38	305221-001	Trip Bar
3	405002-001	Washer Retaining Clip	39	303012-101	Pivot Arm
4	612002-101	Keyed Washer(2req.)	40	310078-001	Spring
5	611002-001	Ear Washer	41	304243-001	Bail Arm Cover
6	903028-003	Washer(3req.)	42	905119-101	Screw
7	409014-001	Spool Clicker Spacer Ring	43	905139-003	Screw(2req.)
8	406032-001	Spool Click Plate	44	131013-201	Body Head Cover
9	905254-003	Screw	45	903140-002	Rotor Washer
10	400721-008	Spool	46	905135-003	Screw(3req.)
11	407074-001	Spring	47	105039-001	Ball Bearing Retainer
12	402020-101	Line Clip	48	906012-007	Bearing(2req.)
13	407018-001	Spring	49	109033-202	Bearing Holder
14	905231-103	Screw	50	110004-001	Clutch Assembly
15	903324-001-002	Spool Adjust Washer	51	702212-003	Pinion
16	903241-001	Main Shaft Washer(2req.)	52	107032-001	Clutch Spring
17	316006-001	POM BUSHING	53	905062-001	Screw
18	712001-001	Spool Holder	54	703005-001	POM Bushing
19	719041-001	Click Gear	55	801029-001	Clutch Switch Spring
20	718293-102	Main Shaft	56	800077-001	Clutch Switch
21	905029-001	Screw	57	B01177-301	Body Assembly
22	319005-003	Rotor Set Plate	58	513070-001	Dust Cap
23	318002-001	Rotor Nut	59	906044-002	Bearing
24	903328-001	Washer	60	700124-101	Driver Gear
25	905120-003	Line Roller Screw	61	903058-002	Washer
26	301078-001	Bail Arm	62	906012-001	Bearing
27	317066-001	Line Roller Collar	63	B02177-301	Body Cover Assembly
28	906006-002	Bearing(2req.)	64	905296-001	Screw(3req.)
29	903125-001	Line Roller Washer	65	905314-001	Screw
30	315065-001	Line Roller	66	905302-001	Screw
31	B05177-301	Semi One Piece Bail	67	705197-002	Oscillation Gear
32	905294-001	Bail Arm Screw(2req.)	68	905127-003	Screw
33	317030-001	Bushing(2req.)	69	726061-002	Oscillation Guide
34	307099-001	Bail Holder	70	708138-001	Oscillation Slider
35	905080-001	Screw(3req.)	71	103380-001	Body Rear Cover
36	336022-001	Rotor Cover	72	B08177-302	Handle Assembly