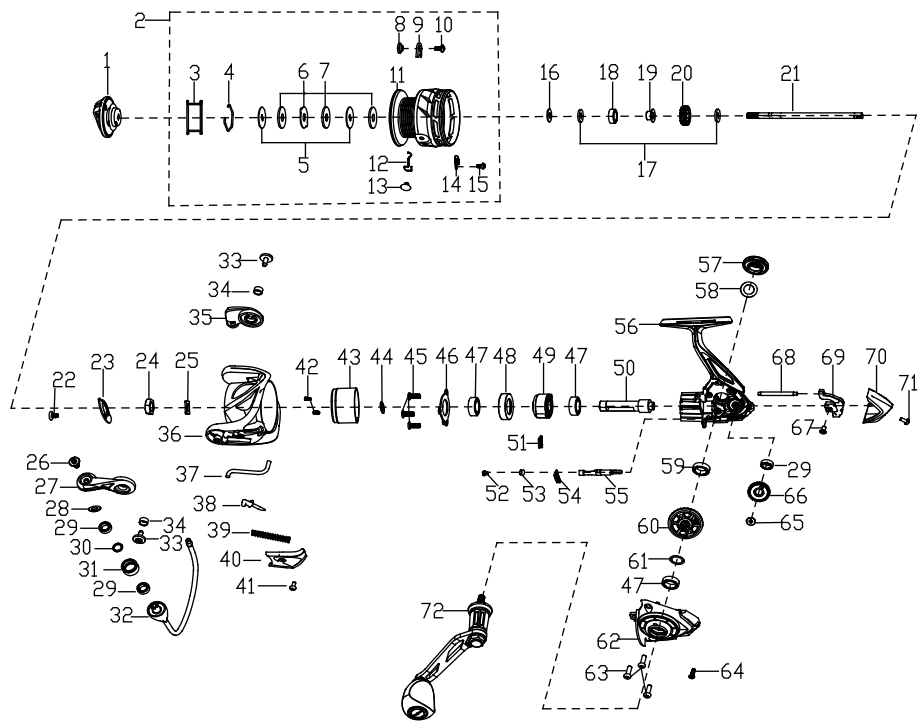


EXPLODED VIEW OF CS10-3000



**PARTS LIST OF CS10-3000**

| ITEM# | PARTS NUMBER    | PARTS DESCRIPTION         | ITEM# | PARTS NUMBER    | PARTS DESCRIPTION     |
|-------|-----------------|---------------------------|-------|-----------------|-----------------------|
| 1     | B10166-501      | Drag Knob Assy            | 37    | 305211-001      | Trip Bar              |
| 2     | B06166-501      | Spool Assy                | 38    | 303011-101      | Pivot Arm             |
| 3     | 628167-001      | Spool Rubber              | 39    | 310078-001      | Spring                |
| 4     | 405002-001      | Washer Retaining Clip     | 40    | 304234-001D25   | Bail Arm Cover        |
| 5     | 612002-004      | Keyed Washer(2req.)       | 41    | 905119-101D62   | Screw                 |
| 6     | 611002-002      | Ear Washer                | 42    | 905139-003      | Screw(2req.)          |
| 7     | 903179-101      | Carbon Washer(3req.)      | 43    | 131013-101PU106 | Body Head Cover       |
| 8     | 409013-001      | Spool Clicker Spacer Ring | 44    | 903140-001      | Rotor Washer          |
| 9     | 406032-001      | Spool Click Plate         | 45    | 905135-003      | Screw(3req.)          |
| 10    | 905254-003      | Screw                     | 46    | 105039-001      | Ball Bearing Retainer |
| 11    | 400719-001      | Spool                     | 47    | 906012-005      | Bearing(3req.)        |
| 12    | 407086-001      | Spring                    | 48    | 109033-202      | Bearing Holder        |
| 13    | 402029-002G59   | Line Clip                 | 49    | 110004-001      | Clutch Assy           |
| 14    | 407018-001      | Spring                    | 50    | 702184-002      | Pinion                |
| 15    | 905231-103      | Screw                     | 51    | 107030-001      | Clutch Spring         |
| 16    | 903324-001-002  | Spool Adjust Washer       | 52    | 905087-003      | Screw                 |
| 17    | 903241-001      | Main Shaft Washer(2req.)  | 53    | 703005-001      | POM Bushing           |
| 18    | 906036-002      | Bearing                   | 54    | 801029-001      | Clutch Switch Spring  |
| 19    | 712001-001      | Spool Holder              | 55    | 800077-001PU106 | Clutch Switch         |
| 20    | 719041-001      | Click Gear                | 56    | B01166-501      | Body Assy             |
| 21    | 718279-004      | Main Shaft                | 57    | 513068-001      | Dust Cap              |
| 22    | 905097-001      | Screw                     | 58    | 628172-002      | Dust Cap Seal         |
| 23    | 319005-201      | Rotor Set Plate           | 59    | 906044-011      | Bearing               |
| 24    | 318002-002      | Rotor Nut                 | 60    | 700118-001      | Driver Gear           |
| 25    | 903328-001      | Washer                    | 61    | 903058-002      | Washer                |
| 26    | 905120-003D62   | Line Roller Screw         | 62    | B02166-501      | Body Cover Assy       |
| 27    | 301079-001PU106 | Bail Arm                  | 63    | 905117-003D62   | Screw(3req.)          |
| 28    | 317066-001      | Line Roller Collar        | 64    | 905109-001      | Screw                 |
| 29    | 906006-002      | Bearing(3req.)            | 65    | 905210-003      | Screw                 |
| 30    | 903125-001      | Line Roller Washer        | 66    | B24166-301      | Oscillation Gear Assy |
| 31    | 315065-001D25   | Line Roller               | 67    | 905127-003      | Screw                 |
| 32    | 313336-001G59   | One Piece Bail            | 68    | 726061-001      | Oscillation Guide     |
| 33    | 905294-001D62   | Bail Arm Screw(2req.)     | 69    | 708138-001      | Oscillation Slider    |
| 34    | 317030-001      | Bushing(2req.)            | 70    | 103373-001D25   | Body Rear Cover       |
| 35    | 307096-001PU106 | Bail Holder               | 71    | 905246-001      | Screw                 |
| 36    | 300238-001PU106 | Rotor                     | 72    | B08166-501      | Handle Assy           |

CS 10300 REV 0017.0B.22